

AUDI A3/S3 8L ; A4 B5.

1999/2000

1	Terminal 15	37
2	Brake pad wear	24
3	Speedometer output 1	
4	5 V supply	
5	Fuel gauge sender	4
6	Tank warning OBD 2	5
7	Terminal 31 (sensor earth)	+12v
8	Coolant temperature	
9	Terminal 31 (load earth)	GND
10	Oil pressure (high)	
11	Engine speed signal	
12	Air conditioner shutoff	
13	Electronic throttle/glow period w	35
14	Adaptive suspension	27
15	Terminal 58d	
16	Trailer turn signal	

17	Main beam
18	Left turn signal
19	Not used
20	Terminal 58s
21	Driver's door contact
22	Low coolant
23	Terminal 30
24	Terminal 31 (load earth)
25	Consumption signal
26	Right parking light
27	Left parking light
28	Speedometer input
29	Low brake fluid
30	S-contact
31	Speedometer output 2
32	ESP/TCS

GENERAL SCHEME 7.7-7.8

MFD		Dash
1		3.3 V
2	15	Grey Washer fluid level
3	14	Grey Brake light
4	21	Blue Driver's door
5	22	Blue Low coolant
6*	USB	White not used
7*	USB	Green not used
8		
9		CAN RX ()
10	19	Green CAN L (motor)
11	18	Green CAN H (motor)
12		Rx CAN comfort
13	23	Green CAN L (convenience)
14	22	Green CAN H (convenience)
13**	6	Grey CAN bus Low (display)
14**	5	Grey CAN bus High (display)
15		5V
16	31	Grey REVERSING LIGHT SWITCH
17	8	Grey Front passenger's door
18	9	Grey Rear right door contact
19	10	Grey Rear left door contact
20	30	Grey TurboTimer

MFD		Dash
21	17	Grey Down
22	18	Grey Up
23	19	Grey Reset
24	2	Blue Brake Pads
25	32	Grey BOOST
26	25	Green HOOD F120
27	30	Blue TurboTimer
28	32	Green Headlight range control
29	6	Green Luggage door switch (diode)
30	15	Green Oil SensorG266
31	13	Green Hand brake
32	12	Green Batterie (61)
33	21	Green ABS
34	27	Green Belts
35	29	Blue Brake Liquid
36	16	Grey Lamp Fault
37	1	Blue Ignition
38		Power OUT 5B +
39		Power -OUT GND
40	28	Green K-line

23	Blue	Power IN 5B +
24	Blue	Power -IN GND

13	Connect if you have NOT RNS-E stereo
14	
13**	Connect if you have RNS-E stereo
14**	

2000

1	Menu control switch (menu)
2	Menu control switch (out A)
3	Menu control switch (out B)
4	Menu control switch (enter)
5	CAN bus High (display)
6	CAN bus Low (display)
7	Not used
8	Not used
9	Not used
10	Not used
11	Enable
12	Clock
13	Data
14	Brake light
15	Washer fluid level
16	Tail light/dipped beam (bulb c

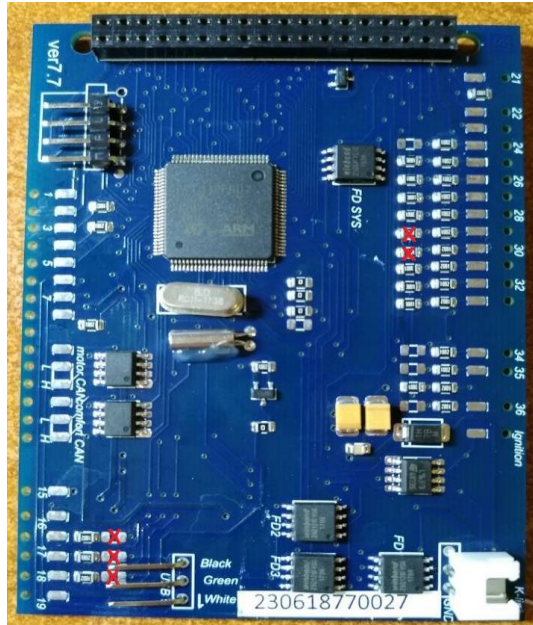
21	17	On-board computer, left
22	18	On-board computer, right
23	19	On-board computer reset
20	Auxiliary heater radio remote control	
21	Summer /winter switching	
22	Auxiliary heater on	
23	Control group 1 Navigation	
24	Control group 2 Navigation	
25	Control group Telematics	
26	Not used	
27	Not used	
28	Not used	
29	Not used	
30	TurboTimer	
31	F4 - REVERSING LIGHT SWITCH	
36	25	BOOST

2000

1	Not used
2	Transponder
3	External photosensor
4	Not used
5	W-wire
6	Central locking signal
7	Right turn signal
8	External buzzer
9	External gong
10	Airbag
11	Standing time output
12	Terminal 61
13	Parking brake
14	CHECK
15	Oil level/oil temperature
16	Oil filter pressure

1999

1	Not used
2	Transponder 1
3	Not used
4	Not used
5	W-wire
6	Tailgate/boot lid (midline vers
7	Brake pad (not used at
8	Input for external buzzer
9	actuation (not used at
10	Tank warning output signal for engine control unit
11	Standing time output
12	Air conditioner shutoff
13	Parking brake
14	Electronic throttle
15	Side light
16	Not used



	17	Transponder 2
11	18	CAN bus High (motor)
10	19	CAN bus Low (motor)
	20	Not used
33	21	ABS
29	22	CAN bus High (convenience)
	23	CAN bus Low (convenience)
	24	Not used
26	25	Bonnet
	26	Filler neck compartment lid
34	27	Belt buckle
32	40	K-wire
31	29	Ambient temperature input
	30	Terminal 58de
30	31	Selector lever position display
28	32	Headlight range control

on only)

17	Transponder 2
18	Not used
19	Not used
20	Not used
21	Not used
22	Not used
23	Not used
24	Not used
25	Not used
26	Not used
27	Not used
28	Not used
29	Terminal 58d (external dimmer p
30	Speedometer output 2
31	Not used
32	Not used