

VW Sharan FullFIS 2001>>

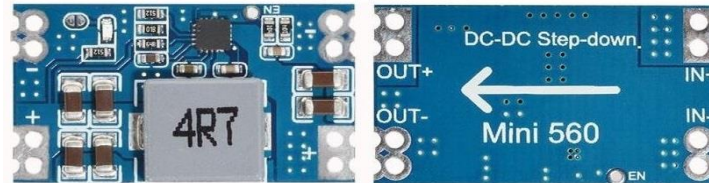
Blue connector

Terminal	37	1	17	
Terminal 15				Main beams
Right turn signal			2 18	Left turn signal
Speedometer output 1			3 19	Fuel consumption
Trailer turn signal			4 20	Terminal 58s
Fuel gauge sender			5 21	4 Driver's door
Electronic throttle (2003>>)			6 22	5 Coolant level low
Terminal 31 (sender earth)			7 23	DC IN+ 5B + Terminal 30
Coolant temperature			8 24	DC IN- GND Terminal 31 (load earth)
Terminal 31 (load earth)			9 25	40 Self-diagnosis K-wire
Oil pressure switch			10 26	Right parking light
Front passenger door			17 11	27 Left parking light
Battery (61)			32 12	28 Speedometer input
Glow period/cat. con. <2003			13 29	35 Brake fluid low
Rear fog light			14 30	27 S contact
Rear left door			19 15	31 34 Seat belt warning
Rear lid			29 16	32 18 Rear right door

GENERAL SCHEME

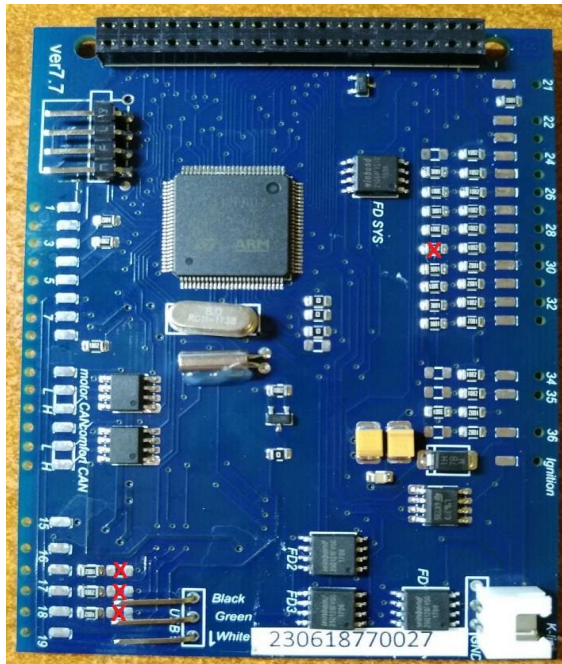
MFD	DASHboard	MFD	DASHboard
1		21 23	Green Down
2	6 Green	22 24	Green Up
3		23 25	Green Reset
4	21 Blue	24 7	Green Brake Pads
5	22 Blue	25 15	Green BOOST
6*	USB White	26 22	Green HOOD F120
7*	USB Green	27 30	Blue TurboTimer/S contact
8	5 Blue	28*	21 Green Bulb failure
9		29 16	Blue Luggage door switch
10	20 Green	30 18	Green Oil SensorG266
11	19 Green	31 13	Green Hand brake
12		32 12	Blue Batterie (61)
13	9 Green	33	
14	8 Green	34 31	Blue Belts
15		35 29	Blue Brake Liquid
16	2 Green	36	
17	11 Blue	37 1	Blue ignition
18	32 Blue	38	DC-DC OUT+ 5B +
19	15 Blue	39	DC-DC OUT- GND
20*	16 Green	40 25	Blue K-line

23	Blue	DC-DC IN+ 12B +
24	Blue	DC-DC IN- GND



Green connector

Radio-controlled clock (+5V) (<<2003)		1	17	
REVERSING LIGHT SWITCH		16	2	18 30 Oil temperature
Radio-controlled clock (data) (<<2003)			3	19 11 CAN H (motor)
CAN data bus, screening			4	20 10 CAN L (motor)
			5	21 28 Bulb failure/failure of HRC
Washer fluid low			2	6 22 26 Bonnet switch
Brake pad wear			24	7 23 21 MFI call-up button - left
CAN low speed (infotainment "+")			14	8 24 22 MFI call-up button - right
CAN low speed (infotainment "-")			13	9 25 23 MFI save switch - reset
Radio-controlled clock (earth) (<<2003)			10	26 Ambient temperature
				11 27 CAN bus (diag "+")
				12 28 CAN bus (diag "-")
Parking brake / HandBRAKE			31	13 29
				14 30 Radio/navigation - clock
Turbo Boost pressure			25	15 31 Radio/navigation - data
TurboTimer			20*	16 32 Radio/navigation - enable



6*	If you inserted the USB wires into the connector at the bottom of the 3dMFD PCD, these pins are not used ..	6*	Если вы вставили провода USB в разъем в нижней части PCD 3dMFD, эти контакты не используются.
16*	You must add wire from the reverse gear light ON (+12) wire to cluster, using free pin of the	16*	Вы должны проложить провод от
20*	This is the OUTput control of the turbo timer relay.	20*	Это управляющий выход реле турботаймера.
28*	If you have Bulb failure unit	28*	Если у вас есть реле контроля перегоревших ламп