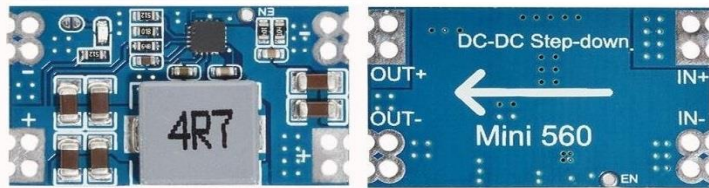
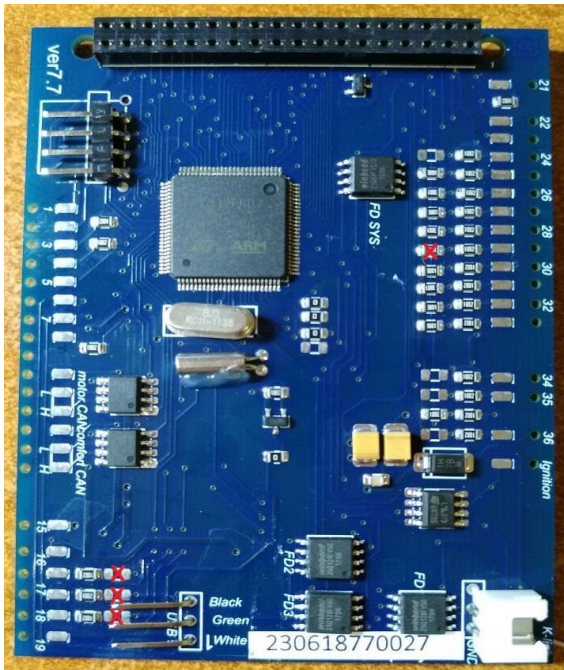


VW T4 No/halfFIS 2001>>

| Blue connector | | | | | |
|----------------------------|----|----|----|-------------|--------------------------|
| Terminal 15, +12V | 37 | 1 | 17 | | Main beams |
| Right turn signal | | 2 | 18 | | Left turn signal |
| Speedometer output 1 | | 3 | 19 | 33 | ABS |
| Trailer turn signal | | 4 | 20 | | Terminal 58s |
| Fuel gauge sender | | 5 | 21 | 4 | Driver's door |
| AirBag | | 6 | 22 | 5 | Coolant level low |
| Terminal 31 (sender earth) | | 7 | 23 | DC IN+ 5B + | Terminal 30 |
| Coolant temperature | | 8 | 24 | DC IN- GND | Terminal 31 (load earth) |
| Terminal 31 (load earth) | | 9 | 25 | 40 | Self-diagnosis K-wire |
| Oil pressure switch | | 10 | 26 | | Right parking light |
| RPM Signal | | 11 | 27 | | Left parking light |
| Battery (61) | 32 | 12 | 28 | | Speedometer input |
| Glow period/cat. con. | | 13 | 29 | 35 | Brake fluid low |
| Rear fog light | | 14 | 30 | 27 | S contact |
| Rear left door | 19 | 15 | 31 | 34 | Seat belt warning |
| Rear lid | 29 | 16 | 32 | 18 | Rear right door |

| GENERAL SCHEME | | | | | |
|----------------|---------------|--------------------------------------|--|--|--|
| MFD | SHboard | | | | |
| 1 | | | | 3,3 V | |
| 2* | minus (-) LED | Windscreen washer fluid level sensor | | | |
| 3 | | | | | |
| 4 | 21 | Blue | | Driver's door | |
| 5* | minus (-) LED | Low coolant | | | |
| 6* | USB | White | | | |
| 7* | USB | Green | | | |
| 8 | 5 | Blue | | Fuel gauge -G1- | |
| 9 | | | | CAN RX (motor) | |
| 10 | 20 | Green | | CAN L (motor) | |
| 11 | 19 | Green | | CAN H (motor) | |
| 12 | | | | Rx CAN comfort | |
| 13 | 9 | Green | | CAN L comfort | |
| 14 | 8 | Green | | CAN H comfort | |
| 15 | | | | 5V | |
| 16* | 2 | Green | | Reversing light switch | |
| 17 | 5 | Green | | Front passenger's door | |
| 18 | 32 | Blue | | Rear right door | |
| 19 | 15 | Blue | | Rear Left door | |
| 20* | 16 | Green | | TurboTimer | |
| 21 | 23 | Green | | Down | |
| 22 | 24 | Green | | Up | |
| 23 | 25 | Green | | Reset | |
| 24 | 7 | Green | | Brake Pads | |
| 25 | 15 | Green | | BOOST | |
| 26 | 22 | Green | | HOOD F120 | |
| 27 | 30 | Blue | | TurboTimer/S contact | |
| 28* | 21 | Green | | Bulb failure | |
| 29 | 16 | Blue | | Luggage door switch (diode protection) | |
| 30 | 18 | Green | | Oil SensorG266 | |
| 31 | 13 | Green | | Hand brake | |
| 32 | 12 | Blue | | Batterie (61) | |
| 33 | 19 | Blue | | ABS | |
| 34 | 31 | Blue | | Belts | |
| 35 | 29 | Blue | | Brake Liquid | |
| 36* | | | | minus (-) LED yellow oil | |
| 37 | 1 | Blue | | ignition | |
| 38 | | | | DC-DC OUT+ 5B + | |
| 39 | | | | DC-DC OUT- GND | |
| 40 | 25 | Blue | | K-line | |

| Green connector | | | | | |
|--|-----|----|----|-----|-----------------------------|
| | | 1 | 17 | | |
| Reversing light switch | 16* | 2 | 18 | 30 | Oil temperature |
| | | 3 | 19 | 11 | CAN H (motor) |
| | | 4 | 20 | 10 | CAN L (motor) |
| Front passenger door | 17* | 5 | 21 | 28* | Bulb failure/failure of HRC |
| Washer fluid low | | 6 | 22 | 26 | Bonnet switch |
| Brake pad wear | 24 | 7 | 23 | 21 | MFI call-up button - left |
| CAN H infotainment | 14 | 8 | 24 | 22 | MFI call-up button - right |
| CAN L infotainment | 13 | 9 | 25 | 23 | MFI save switch - reset |
| Radio-controlled clock (earth) (<2001) | | 10 | 26 | | Ambient temperature |
| | | 11 | 27 | | CAN bus (diag "+") |
| | | 12 | 28 | | CAN bus (diag "-") |
| Parking brake / HandBRAKE | 31 | 13 | 29 | | |
| | | 14 | 30 | | Radio/navigation - clock |
| Turbo Boost pressure | 25 | 15 | 31 | | Radio/navigation - data |
| TurboTimer | 20* | 16 | 32 | | Radio/navigation - enable |



| | | | |
|------------|--|------------|---|
| 2* | If you install 3dMFD in the halfFIS cluster, connect 2 pin MFD to minus (-) LED Windscreen washer fluid level sensor -G33- | 2* | Если вы устанавливаете 3dMFD в кластер halfFIS, подключите 2-контактный MFD к минусу (-) светодиода Датчик уровня жидкости омывателя ветрового стекла -G33- |
| 5* | If you install 3dMFD in the halfFIS cluster, connect 2 pin MFD to minus (-) LED Low coolant sensor | 5* | Если вы устанавливаете 3dMFD в кластер HalfFIS, подключите 2-контактный MFD к минусу (-) светодиода Датчик низкого уровня охлаждающей жидкости |
| 6* | If you inserted the USB wires into the connector at the bottom of the 3dMFD PCD, these pins are not used .. | 6* | Если вы вставили провода USB в разъем в нижней части PCD 3dMFD, эти контакты не используются. |
| 16* | You must add wire from the reverse gear light ON (+12V) wire to cluster, using free pin of the green connector | 16* | Вы должны проложить провод от провода включения заднего хода (+12V) в приборку через свободный пин зеленого разъема |
| 20* | This is the OUTput control of the turbo timer relay. | 20* | Это управляющий выход реле турботаймера. |
| 28* | If you have Bulb failure unit | 29* | Если у вас установлен дополнительный датчик давления масла |
| 29* | If you have a burned-out lamp control relay. | 28* | Если у вас есть реле контроля перегоревших ламп |
| 36* | If you install 3dMFD in the FullFIS cluster, this 36 pin is not used. | 36* | Если вы устанавливаете 3dMFD в кластере FullFIS, этот 36-контактный вывод не |